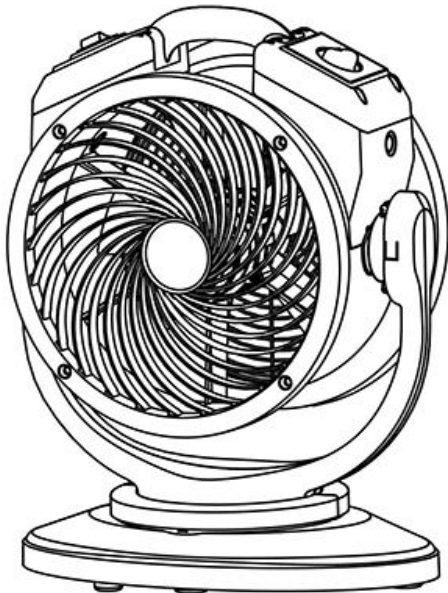




Air Circulator Owner's Manual



**Model :
FC-100S, FC-300S**

Read and save these instructions

(115V 60Hz)



Intertek

www.xpower.com | 1-(855)-855-8868 | info@xpower.com

Safety Instructions

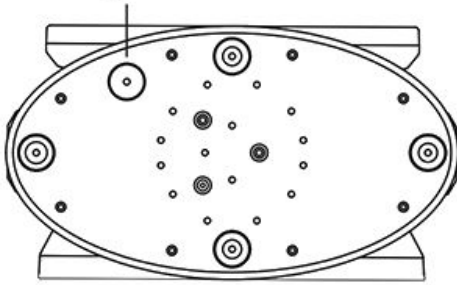
WARNING - READ AND SAVE THIS INSTRUCTIONS BEFORE USING THIS PRODUCT.

The user of electrical products may create hazards that include, but are not limited to injury, fire, electrical shock. Failure to follow these instructions may damage and/or impair its operation and void the warranty.

- Before operating, remove all packaging material and check for any damage that may have occurred during shipping or any missing items.
- Check household power supply to ensure it matches the appliance's specification.
- **DO NOT** operate any fan with a damaged cord or plug. Discard fan or return it to an authorized service facility for examination and/or repair.
- Use only on GFCI protected receptacles. Please contact a qualified electrician for verification and / or installation of a GFCI receptacle if necessary.
- **DO NOT** run cord under carpeting. **DO NOT** cover cord with throw rugs, runners, or similar coverings. **DO NOT** route cord under furniture or appliances. Arrange cord away from traffic area and where it will not be tripped over.
- To reduce the risk of fire or electric shock, **DO NOT** use this fan with any solid-state speed control device.
- **DO NOT** touch this appliance or the plug with wet hands or while standing in water.
- **DO NOT** operate the appliance in any pooled water.
- **DO NOT** use the product in areas where gasoline, paint or other flammable goods and objects are used or stored.
- **DO NOT** insert or allow objects to enter any ventilation or exhaust opening as this may damage the appliance and void the warranty.
- **DO NOT** cover the air inlet or outlet on the appliance.
- **DO NOT** direct the air flow at human faces or bodies.
- **DO NOT** allow children to play with this appliance.
- **AUTOMATICALLY OPERATED DEVICE** – To reduce the risk of injury, disconnect from power supply before servicing.
- Remove the power cord from the electrical receptacle by grasping and pulling on the power cord plug-end only, **DO NOT** pull the cord directly.
- **DO NOT** attempt to repair or adjust any electrical or mechanical functions of this appliance, as this may cause danger and void the warranty.
- If the appliance is damaged or it malfunctions, **DO NOT** continue to use it. Unplug the product from the electrical outlet. Refer to troubleshooting guide or contact XPOWER.
- Store in a dry area, away from exposure to sunlight, extreme temperature and humidity, or other extreme environments, when not in use.
- An electronic instruction manual can be obtained through manufacturer's website www.xpower.com.

Special Instructions of Anti-Toppling Safety Switch

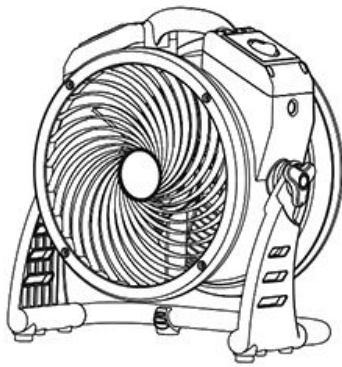
Anti-toppling Safety Switch



Bottom Base Cover

- The Anti-toppling Safety Switch is designed to protect the machine from functioning when the machine topples from a level surface.
- Machine continuously working at a toppled position may lead to safety concern or damage to the machine.
- **WARNING: DO NOT** keep the Anti-Toppling Safety Switch on manually, for example, by tape. Always keep the switch free of function.

Items Included

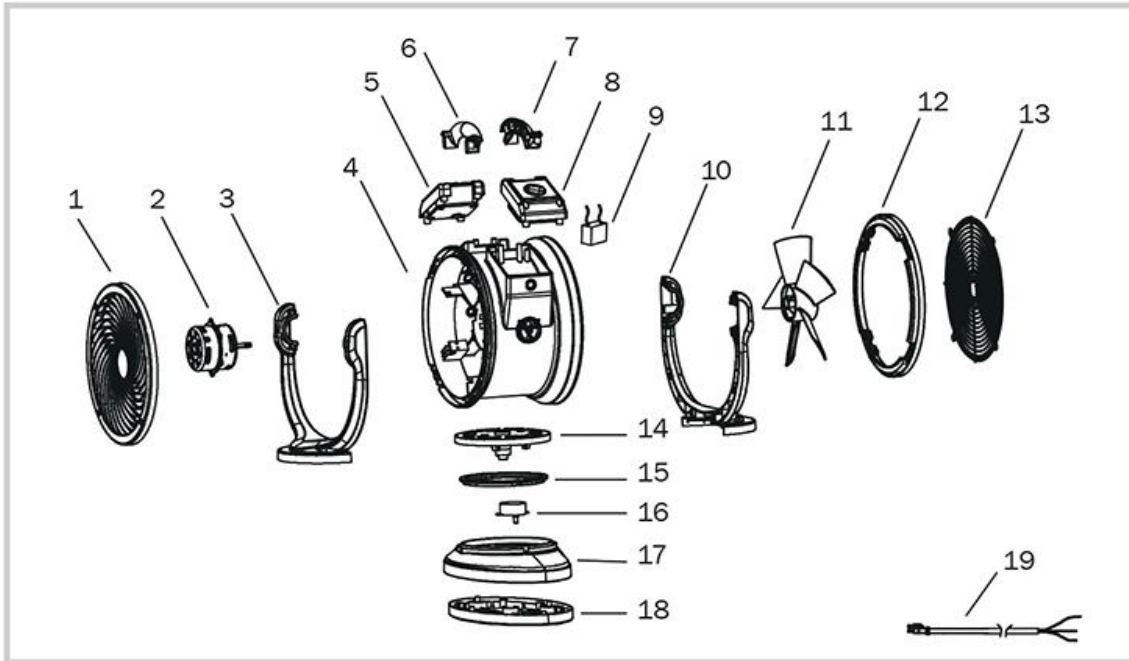


- Air Circulator x 1*



- Owner's Manual x 1

Parts Description



- | | | |
|---------------------------------------|---------------------------------|------------------------|
| (1) Front Grille Cover | (7) Housing Handle Rear | (13) Rear Grille Cover |
| (2) Motor | (8) Speed Switch Panel Assembly | (14) Rack Base |
| (3) Front Rack | (9) Capacitor | (15) Plastic Washer |
| (4) Housing | (10) Rear Rack | (16) Oscillation Motor |
| (5) Oscillation Switch Panel Assembly | (11) Fan | (17) Top Base Cover |
| (6) Housing Handle Front | (12) Rear End Cover | (18) Bottom Base Cover |
| | | (19) Power Cord |

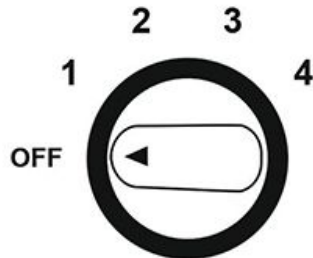
Air Circulator Introduction

- XPOWER Air Circulators are designed to offer efficient air circulation and ventilation with its high and long-distance focused airflow.
- It's perfect for air circulation and ventilation in janitorial/sanitation jobs, air condition control and more.



Installation and Operation Guide

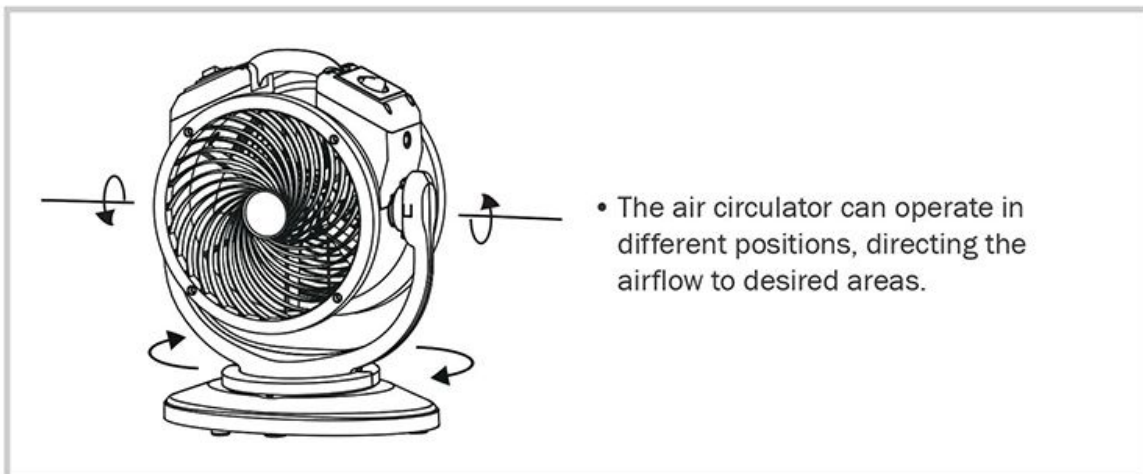
Switch Plate



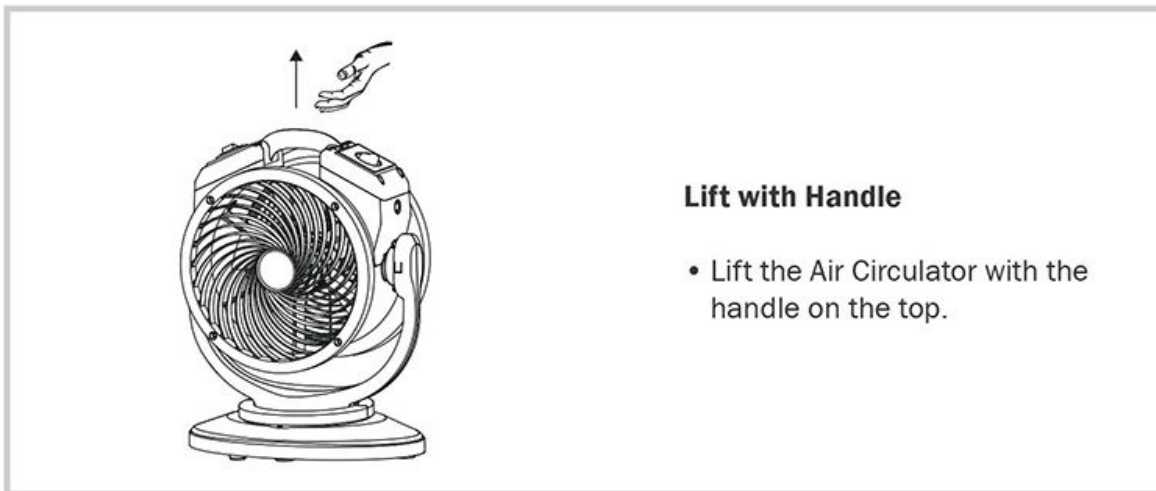
Four Speed Control

- Turn to “**OFF**” position to switch the machine OFF. Turn to any speed position to switch the machine ON.
- Turn clockwise to set the desired speed. There are 4 speeds from: **4, 3, 2, 1**. “**4**” is the highest speed and “**1**” is the lowest speed .

Multiple Operating Positions



Transportation



Lift with Handle

- Lift the Air Circulator with the handle on the top.

User Maintenance Instructions

Frequent maintenance is recommended on this appliance. Failure to follow the maintenance instructions may cause failure of the appliance and void the warranty.

- When not in use, unplug and store the appliance in a dry and cool indoor place. Make sure it's out of reach of children.
- Before performing any maintenance or cleaning, always disconnect the Air Circulator from its power source.
- Use a damp cloth to wipe the surface of the housing. Do not clean the unit with water directly.
- Check if the grille covers are clean. Remove dirt or any other objects that could block the air inlet and air outlet.

Organizing The Cord



- Wrap the power cord around the rack base after use.
- Use convenient clip on the housing to secure in place.

Troubleshooting Guide

PROBLEM	POSSIBLE CAUSE	SOLUTION
Air Circulator does not start	No electricity.	Check for power supply.
	The power cord is not properly plugged in.	Remove and reconnect the power cord.
	The machine is working under an extreme temperature.	Turn off the machine and unplug it. Let the machine cool down to normal temperature.
Unit runs but the speed is abnormal	Air inlet or air outlet is blocked.	Remove blockage.

* These functions do not apply to all models mentioned in this manual.

If troubleshooting does not resolve your problem, please contact XPOWER or other parties authorized by XPOWER for further instructions.

Technical Specification

MODEL NUMBER	FC-100S	FC-300S
Voltage/Frequency	115 V~60 Hz	
Amperage	0.6 A	1.0 A
Motor Power	-	-
Rated Airflow	1100 CFM	2100 CFM
Speed Control	4 Speeds	
Cord Length	6 ft. / 1.8 m	10 ft. / 3.0 m
Housing	PP	
Unit Dimension (L) x (W) x (H)	14.8 x 8.3 x 19.0 in. / 37.5 x 21.0 x 48.3 cm	17.1 x 9.6 x 23.0 in. / 43.5 x 24.5 x 58.4 cm
Unit Weight	11.5 lbs. / 5.22 kg	15.1 lbs. / 6.83 kg
Safety Cer-tification	ETL / C-ETL	

If your product(s) is not listed above, please visit www.xpower.com for more information.

XPOWER Limited Warranty (USA)

1 YEAR LIMITED WARRANTY

XPOWER-branded products purchased in the U.S. from authorized distributors include a 1-year limited warranty. Contact XPOWER to confirm warranty information about your product(s).

This limited warranty covers defects in materials and workmanship in your XPOWER-branded products, purchased in the **U.S. ONLY**. Local warranty policy (if any) in your country will cover products purchased outside the U.S.

IMPORTANT:

- (1) Please finish the online warranty registration before usage. Visit www.xpower.com/service-support/warranty-registration.
- (2) This Limited Warranty applies with its own timeliness. Contact XPOWER or visit www.xpower.com for more information.

Items mentioned but not limited to below are not covered by warranty:

- (1) Power cord, filters or any other components considered as a “consumable parts” by XPOWER.
- (2) Normal wear and tear.
- (3) Problems that result, directly or indirectly, at XPOWER’s sole discretion, from:
 - (3.1) External causes such as accident, abuse, misuse or problems with electrical power supply.
 - (3.2) Disassembling, servicing or modification not authorized by XPOWER.
 - (3.3) Usage that is not accordant with product instructions stated in Owner’s Manual.
 - (3.4) Failure to follow the product instructions or lack of necessary maintenance stated in Owner’s Manual.

Before contacting XPOWER, please try one or more of the following:

- (1) Consult this Owner’s Manual and follow the instructions of troubleshooting guide.
- (2) Access www.xpower.com for more advice and information that could be helpful to address your problems.

If you need additional assistance from XPOWER, please:

- (1) Email info@xpower.com.
- (2) Call XPOWER U.S. Customer Service Department at **855-855-8868** or other numbers provided on www.xpower.com.
- (3) Visit XPOWER U.S. Head Office at [668 S. 6th Ave., City of Industry, CA 91746](http://www.xpower.com) or the most current address provided on www.xpower.com.

Please also have your original proof of purchase and the serial number(s) of your product(s) ready when you contact XPOWER.

If you are instructed to return the unit for service or replacement, please:

- (1) Request a RMA (Return-Merchandise-Authorization) number.
- (2) Use the original or an equivalent packaging, prepay shipping charges at your own expense to the address provided by XPOWER, with the RMA number on the shipping label or the packaging.
- (3) Include all the original parts and components.

XPOWER will inspect, assess and advise the repairs needed and applicable cost, if any. For products under warranty, we will pay to ship the repaired or replaced product(s) to you if you use an address within the Contiguous United States. Otherwise, we will ship the product(s) to you at your own expense.



XPOWER Manufacture, INC.

668 S. 6th Ave.,

City of Industry, CA 91746 USA

www.xpower.com | 1-(855)-855-8868 | info@xpower.com

Read and save these instructions
Lea y guarde estas instrucciones
Lisez et gadez ces instructions